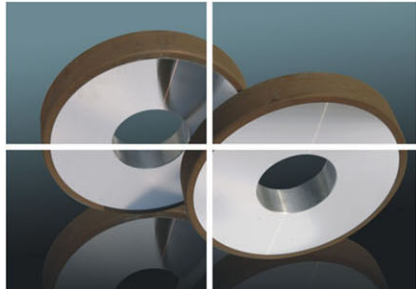
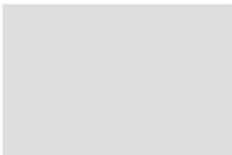




河南四方达超硬材料股份有限公司
SF DIAMOND CO.,LTD.



品质精益求精 服务永无极限

SF DIAMOND

四方达金刚石砂轮

SFD DIAMOND GRINDING WHEELS

河南四方达超硬材料股份有限公司（原河南四方超硬材料股份有限公司）始创于1997年，是专业生产聚晶金刚石、立方氮化硼、金刚石微粉、金刚石砂轮及其相关制品的高新技术企业。公司提供优质的树脂结合剂金刚石砂轮及陶瓷结合剂金刚石砂轮。

SF Diamond Co., Ltd. (SFD for short, the former is Henan SiFang Super Hard Material Co., Ltd.) built in 1997, who is a high-tech enterprise that specializes in the manufacture of polycrystalline diamond (PCD), polycrystalline cubic boron nitride (PCBN), diamond powder, diamond grinding wheels and related products. SFD provides resin bond diamond grinding wheels and vitrified bond diamond grinding wheels.

树脂结合剂金刚石砂轮

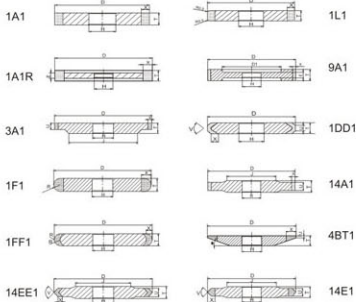
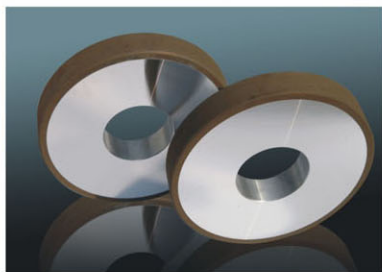
RESIN BOND DIAMOND GRINDING WHEELS

树脂结合剂金刚石砂轮可用于加工硬质合金、陶瓷、PCD&PCBN、铸铁等材料

Resin bond diamond grinding wheels are suitable for grinding cemented carbide, ceramics, PCD&PCBN, cast iron and other hard material

平行砂轮系列

STRAIGHT GRINDING WHEEL SERIES



D	X	D	X
30	3、4	160	5
40	3、4	175	4、5、6、8、10、12
45	3、4	180	5、7、10
50	3、4	200	4、5、10
60	3、4、5	250	5、8、10
75	3、5、10	300	5、10
80	3、5	350	5、10
90	5、8、10	400	5、10
100	3、5、6、8、10	450	5、10
125	3、4、5、6、8、10	500	5、10
140	5	600	5、10
150	4、5、6、10		

T、H、E、J、U可根据客户要求加工。
T,H,E,J,U According to the customer's requirements.

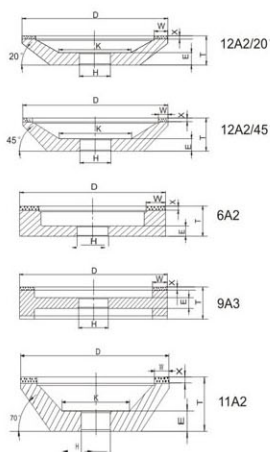
杯·碗·碟砂轮系列一

STRAIGHT CUP,TAPERED CUP,DISH GRINDING WHEEL SERIES (1)



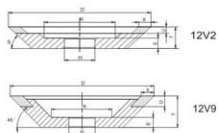
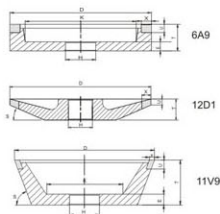
D	W	D	W
75	3, 5, 10	150	3, 4, 5, 6, 10, 12, 15, 20, 25
80	3, 5, 20, 30	175	5, 8, 10, 12
90	5, 8, 10	180	5, 7, 10
100	3, 5, 8, 10	200	4, 5, 9, 10
125	3, 4, 5, 6, 8, 10, 15, 20, 21, 30	250	10, 15, 25
		350	13
135	5, 10	450	25, 35

T、H、X、E可根据客户要求加工。
T,H,X,E According to the customer's requirements.



杯·碗·碟砂轮系列二

STRAIGHT CUP,TAPERED CUP,DISH GRINDING WHEEL SERIES (2)



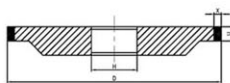
D	X	U
75	3, 5	3~10
100	3, 5	3~10
125	3, 6	3~10
150	3, 6	3~10

T、H、K、S可根据客户要求加工。
T,H,K,S According to the customer's requirements.

陶瓷结合剂金刚石砂轮
VITRIFIED BOND DIAMOND GRINDING WHEELS

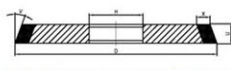
陶瓷结合剂金刚石砂轮具有强度高, 耐热性能好, 切削锋利, 磨削效率高, 磨削过程中不易发热和堵塞, 热膨胀小, 易控制加工精度。广泛应用在晶圆(半导体硅片和太阳能硅片)、金刚石复合片, 金刚石聚晶, 金刚石刀具, 立方氮化硼刀具, 钨钢(硬质合金), 新型工程结构陶瓷, 宝石, 水晶, 稀土材料等高硬脆材料的机械加工中。

The Vitrified Bond Diamond Grinding Wheels feature with high strength, high heat resistance, excellent cutting ability and high grinding efficiency, therefore, heating up or blacking is not easy to occur in the grinding process, and the low thermal dilation provide a high possibility of free control of process precision. Vitrified Bond Diamond Grinding Wheels are applied in many hard and brittle material machining, such as wafer (semiconductor silicon slice and solar energy silicon slice), polycrystalline diamond compact (PDC), polycrystalline diamond (PCD), PCD tools, PCBN tools, tungsten steel (cemented carbide), new emerging structure ceramic, precious stones, crystal, rare earth materials (magnetic material), and etc.


1A1

3A1

D	T	H	X
25	4.6.8.10.12.16.20	10.16	3.4.5
30	10.12.16.20	12	3.5
40	4.6.8.10.12.20	12-15	5.8
50	4.6.8.10.12.16.20	15.20	5
60	6.8.10.16.20	15.20	5.8
75	10.20	20.32	4.5.8
80	10.20	20.32	5.8.10
100	2.3.4.5.6.8.10.12.14	20.32	5.8.10.12
125	2.3.4.5.6.8.10.12.16	20.32	5.10
150	10.12.15.16.20	32.40	5.8.10
175	10.12.16.20	32.40.50.8	5.10
200	10.12.15.16.20	32.50.8	5.10
250	10.20.25	50.8.75.127	5.10.15
300	15.25.32.40	75.127	5.10.15

D	T	H	J	U	X
75	10	20.32	50	5	3.5
75	12	20.32	50	5	3.5
100	10	20	75	5	5.10
100	15	20	75	10	5.10
125	10	20.32	100	5	5.10
125	15	20.32	100	10	5.10
150	15	32.40	125	8	5.7.10
150	20	32.40	125	10	5.7.10
200	15	50.8.75	180	8	5.10
200	20	50.8.75	180	10	5.10


1V1

1F1

D	U	H	X	V
60	4	10	2	4
75	6	10	3	6
80	6	10	3	6
100	2.3.4.5.6.8.10	20	4	6
125	2.3.4.5.6.8.10	20.32	4	6.10
150	8.10.12.14	32.40	5	10

D	T	H	R	X
60	4	10	2	4
75	6	10	3	6
80	6	10	3	6
100	2.3.4.5.6.8.10	20	4	6
125	2.3.4.5.6.8.10	20	4	6.10
150	10	32	5	10